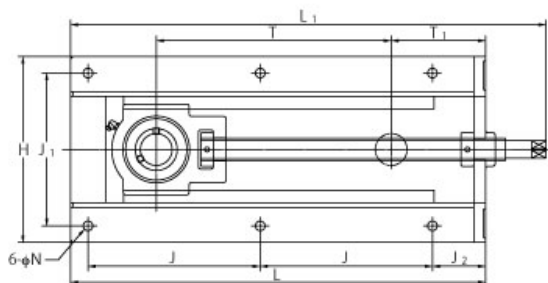
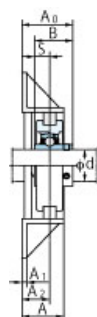
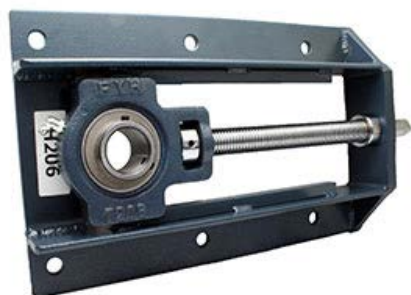


UCTH205-15J-150



样式	
轴承座型号	H204.5-150
轴承公称型号	UC205-15
轴径	15/16 in
轴承座固定螺栓	M10 3/8 in
质量	6.7 kg 14.77 lb
轴固定方法	顶丝
适用油嘴	B-1/4-28UNF

主要尺寸	
H	200 mm 7-7/8 in
L	318 mm 12-17/32 in
L1	377 mm 14-27/32 in
A	50 mm 1-31/32 in
J	117 mm 4-39/64 in
J1	154 mm 6-1/16 in
J2	65 mm 2-9/16 in
N	12 mm 15/32 in
T	152 mm 5-1/32 in
T1	88 mm 3-15/32 in
A1	6 mm 1/4 in
A2	28 mm 1-7/64 in
A0	47.8 mm 1-7/8 in
B	34.1 mm 1.343 in
S	14.3 mm 0.563 in

基本额定负荷	
Cr	14.0 kN 3147 lbf
Cor	7.85 kN 1765 lbf
系数 fo	13.9