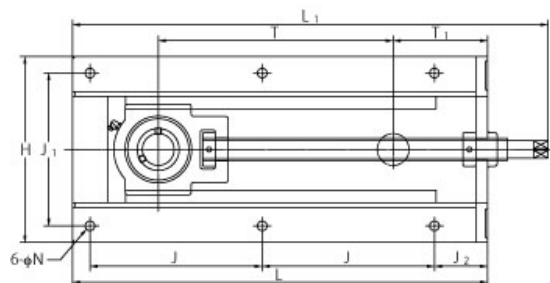
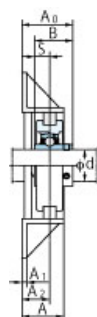
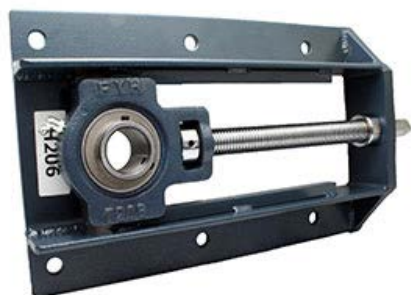


UCTH207-21J-230



样式	
轴承座型号	H207-230
轴承公称型号	UC207-21
轴径	1-5/16 in
轴承座固定螺栓	M10 3/8 in
质量	10.5 kg 23.15 lb
轴固定方法	顶丝
适用油嘴	B-1/4-28UNF

主要尺寸	
H	213 mm 8-3/8 in
L	430 mm 16-15/16 in
L1	500 mm 19-11/16 in
A	50 mm 1-31/32 in
J	173 mm 6-13/16 in
J1	166 mm 6-17/32 in
J2	65 mm 2-9/16 in
N	12 mm 15/32 in
T	219 mm 8-5/8 in
T1	107 mm 4-7/32 in
A1	6 mm 1/4 in
A2	32 mm 1-17/64 in
A0	57.4 mm 2-1/4 in
B	42.9 mm 1.689 in
S	17.5 mm 0.689 in

基本额定负荷	
Cr	25.7 kN 5778 lbf
Cor	15.4 kN 3462 lbf
系数 fo	13.9