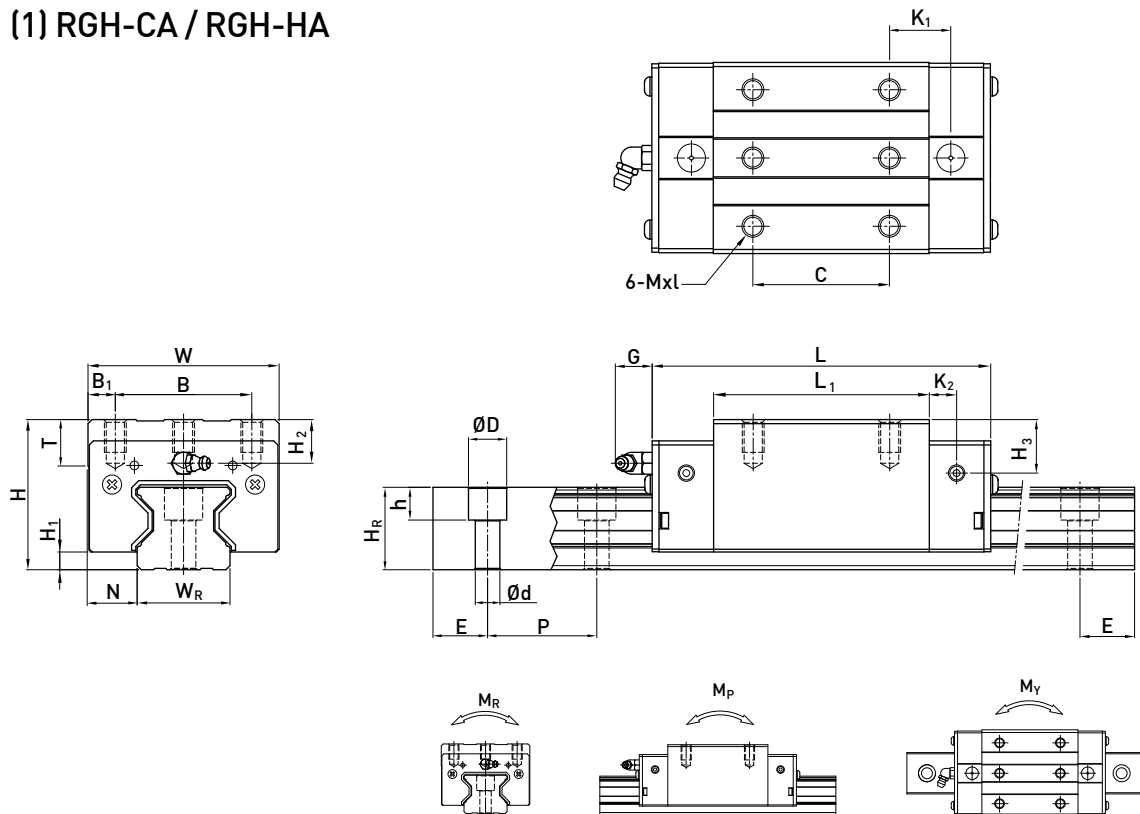


## 2-9-13 RG系列直线导轨尺寸表

### (1) RGH-CA / RGH-HA



型号	组件尺寸 (mm)			滑块尺寸 (mm)														导轨尺寸(mm)										导轨的 固定螺 栓尺寸	基本 动额 定负荷	基本 静额 定负荷	容许静力矩			重量	
	H	H <sub>1</sub>	N	W	B	B <sub>1</sub>	C	L <sub>1</sub>	L	K <sub>1</sub>	K <sub>2</sub>	G	MxL	T	H <sub>2</sub>	H <sub>3</sub>	W <sub>R</sub>	H <sub>R</sub>	D	h	d	P	E	(mm)	C(kN)	C <sub>0</sub> (kN)	M <sub>R</sub>				M <sub>P</sub>	M <sub>Y</sub>	滑块	导轨	
RGH 15CA	28	4	9.5	34	26	4	26	45	68	13.4	4.7	5.3	M4 x 8	6	7.6	10.1	15	16.5	7.5	5.7	4.5	30	20	M4 x16	11.3	24	0.311	0.173	0.173	0.20	1.8				
RGH 20CA	34	5	12	44	32	6	36	57.5	86	15.8	6	5.3	M5 x 8	8	8.3	8.3	20	21	9.5	8.5	6	30	20	M5 x20	21.3	46.7	0.647	0.46	0.46	0.40	2.76				
RGH 20HA							50	77.5	106	18.8															26.9	63	0.872	0.837	0.837	0.53					
RGH 25CA	40	5.5	12.5	48	35	6.5	35	64.5	97.9	20.75	7.25	12	M6 x 8	9.5	10.2	10	23	23.6	11	9	7	30	20	M6 x20	27.7	57.1	0.758	0.605	0.605	0.61	3.08				
RGH 25HA							50	81	114.4	21.5															33.9	73.4	0.975	0.991	0.991	0.75					
RGH 30CA	45	6	16	60	40	10	40	71	109.8	23.5	8	12	M8 x10	9.5	9.5	10.3	28	28	14	12	9	40	20	M8 x25	39.1	82.1	1.445	1.06	1.06	0.90	4.41				
RGH 30HA							60	93	131.8	24.5															48.1	105	1.846	1.712	1.712	1.16					
RGH 35CA	55	6.5	18	70	50	10	50	79	124	22.5	10	12	M8 x12	12	16	19.6	34	30.2	14	12	9	40	20	M8 x25	57.9	105.2	2.17	1.44	1.44	1.57	6.06				
RGH 35HA							72	106.5	151.5	25.25															73.1	142	2.93	2.6	2.6	2.06					
RGH 45CA	70	8	20.5	86	60	13	60	106	153.2	31	10	12.9	M10x17	16	20	24	45	38	20	17	14	52.5	22.5	M12 x35	92.6	178.8	4.52	3.05	3.05	3.18	9.97				
RGH 45HA							80	139.8	187	37.9															116	230.9	6.33	5.47	5.47	4.13					
RGH 55CA	80	10	23.5	100	75	12.5	75	125.5	183.7	37.75	12.5	12.9	M12x18	17.5	22	27.5	53	44	23	20	16	60	30	M14 x45	130.5	252	8.01	5.4	5.4	4.89	13.98				
RGH 55HA							95	173.8	232	51.9															167.8	348	11.15	10.25	10.25	6.68					
RGH 65CA	90	12	31.5	126	76	25	70	160	232	60.8	15.8	12.9	M16 x20	25	15	15	63	53	26	22	18	75	35	M16x50	213	411.6	16.20	11.59	11.59	8.89	20.22				
RGH 65HA							120	223	295	67.3															275.3	572.7	22.55	22.17	22.17	12.13					

注：1. 1 kgf = 9.81 N

2. 此为C<sub>100R</sub>的理论动额定负荷，若有需要C<sub>50R</sub>转换公式：C<sub>50R</sub> = 1.23 x C<sub>100R</sub>