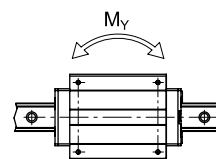
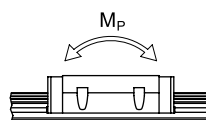
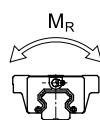
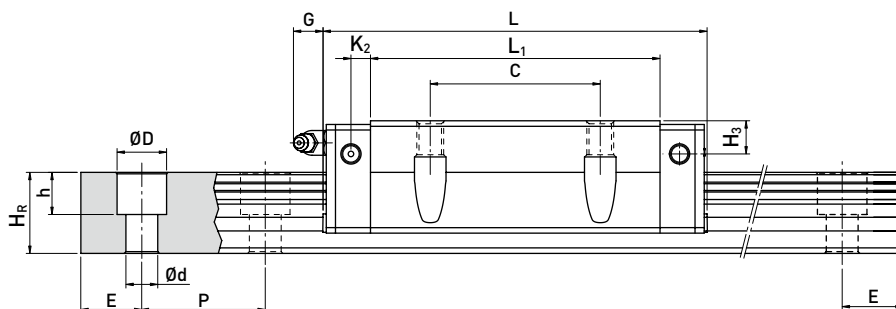
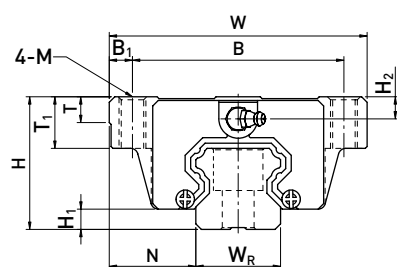


HG系列

重负荷型滚珠线性滑轨

(3) HGW-CA / HGW-HA



型号	组件尺寸 (mm)			滑块尺寸 (mm)																导轨尺寸 (mm)								导轨的 固定螺 柱尺寸	基本 动额 定负荷	基本 静额 定负荷	容许静力矩			重量	
	H	H ₁	N	W	B	B ₁	C	L ₁	L	K ₁	K ₂	G	M	T	T ₁	H ₂	H ₃	W _R	H _R	D	h	d	P	E	(mm)	C(kN)	C ₀ (kN)				M _R	M _P	M _V	滑块	导轨
																															kN·m	kN·m	kN·m	kg	kg/m
HGW 15CA	24	4.3	16	47	38	4.5	30	39.4	61.4	8	4.85	5.3	M5	6	8.9	3.95	3.7	15	15	7.5	5.3	4.5	60	20	M4x16	14.7	23.47	0.12	0.10	0.10	0.17	1.45			
HGW 20CA	30	4.6	21.5	63	53	5	40	50.5	77.5	10.25	6	12	M6	8	10	6	6	20	17.5	9.5	8.5	6	60	20	M5x16	27.1	36.68	0.27	0.20	0.20	0.40	2.21			
HGW 20HA								65.2	92.2	17.6																32.7	47.96	0.35	0.35	0.35	0.52				
HGW 25CA	36	5.5	23.5	70	57	6.5	45	58	84	10.7	6	12	M8	8	14	6	5	23	22	11	9	7	60	20	M6x20	34.9	52.82	0.42	0.33	0.33	0.59	3.21			
HGW 25HA								78.6	104.6	21																42.2	69.07	0.56	0.57	0.57	0.80				
HGW 30CA	42	6	31	90	72	9	52	70	97.4	14.25	6	12	M10	8.5	16	6.5	10.8	28	26	14	12	9	80	20	M8x25	48.5	71.87	0.66	0.53	0.53	1.09	4.47			
HGW 30HA								93	120.4	25.75																58.6	93.99	0.88	0.92	0.92	1.44				
HGW 35CA	48	7.5	33	100	82	9	62	80	112.4	14.6	7	12	M10	10.1	18	9	12.6	34	29	14	12	9	80	20	M8x25	64.6	93.88	1.16	0.81	0.81	1.56	6.30			
HGW 35HA								105.8	138.2	27.5																77.9	122.77	1.54	1.40	1.40	2.06				
HGW 45CA	60	9.5	37.5	120	100	10	80	97	139.4	13	10	12.9	M12	15.1	22	8.5	20.5	45	38	20	17	14	105	22.5	M12x35	103.8	146.71	1.98	1.55	1.55	2.79	10.41			
HGW 45HA								128.8	171.2	28.9																125.3	191.85	2.63	2.68	2.68	3.69				
HGW 55CA	70	13	43.5	140	116	12	95	117.7	166.7	17.35	11	12.9	M14	17.5	26.5	12	19	53	44	23	20	16	120	30	M14x45	153.2	211.23	3.69	2.64	2.64	4.52	15.08			
HGW 55HA								155.8	204.8	36.4																184.9	276.23	4.88	4.57	4.57	5.96				
HGW 65CA	90	15	53.5	170	142	14	110	144.2	200.2	23.1	14	12.9	M16	25	37.5	15	15	63	53	26	22	18	150	35	M16x50	213.2	287.48	6.65	4.27	4.27	9.17	21.18			
HGW 65HA								203.6	259.6	52.8																277.8	420.17	9.38	7.38	7.38	12.89				

注：1 kgf = 9.81 N