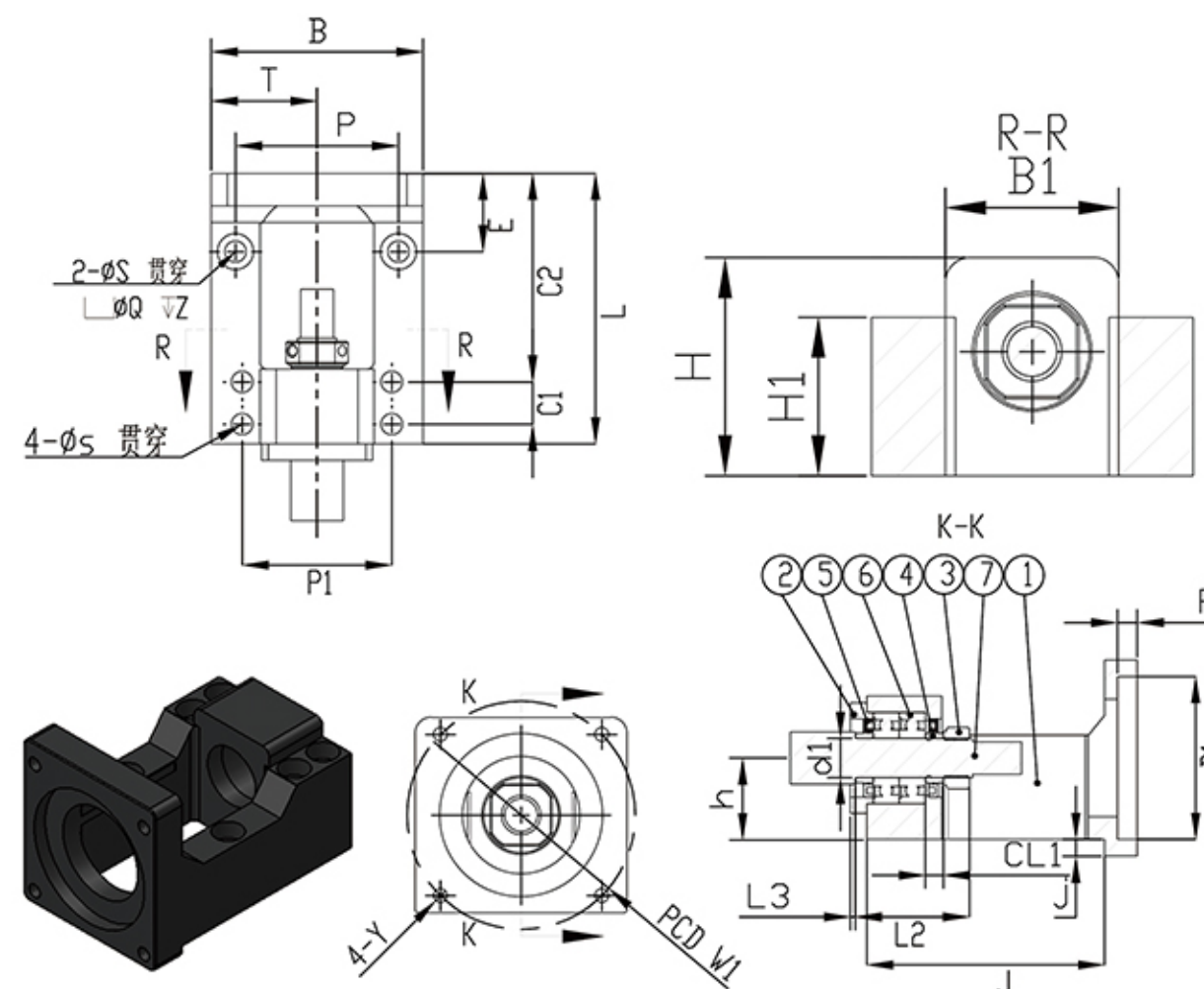


HM12-57 系列 HM12-60 系列

項目號 Numbering	部件名稱/ Part Name	數量 Quantity
1	傳動座主體/Housing	1
2	壓蓋/Gland	1
3	頂圈/Top ring	2
4	骨架油封/Simmerings	2
5	角接觸軸承7001 Angular contact bearings 7001	1組
6	M12X1s鎖緊螺母 M12X1s locknut	1組

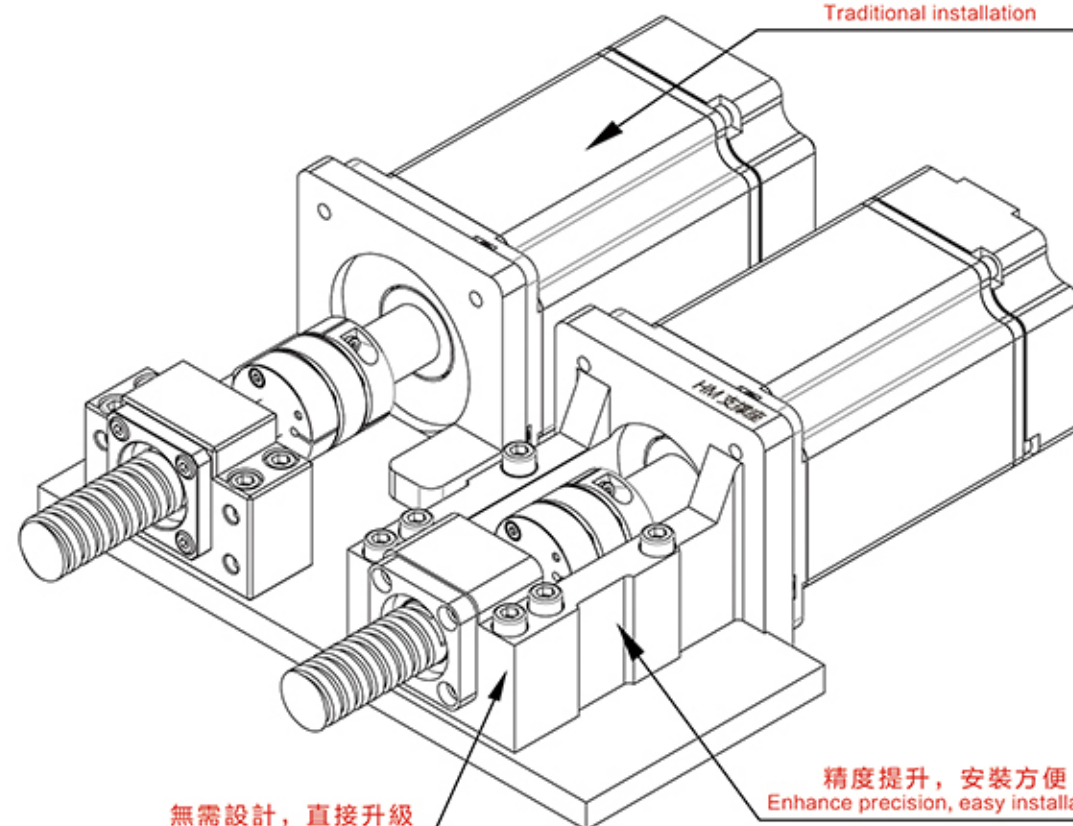


特点/Feature

一體化馬達座定位孔與軸承安裝孔採取一體化加工,能最大限度保證馬達軸心/聯軸器軸心/軸承孔軸心/絲杆軸心等四位一休,從而克服了分離式馬達座與分離式軸承座聯合安裝時難以同軸的缺點!

Integrated motor mount positioning holes and the bearing mounting hole take the integration process, to ensure maximum motor shaft / coupling Axial / axial bearing hole / screw axis other four a break to overcome the separation of motor housing when the split bearing joint is difficult to install coaxial shortcomings!

傳統的安裝方式
Traditional installation



無需設計, 直接升級
No need to set a direct upgrade

精度提升, 安裝方便
Enhance precision, easy installation

選型尺寸表 / Seleyion Size Chart

單位: mm

型號 Model	D1	W1	Y	L	h0.02	B	P	P1	T	軸徑d1	CL1	L2	L3	H	H1	B1
HM12-57	38.1	66.7	M4	89	25	60	46	46	30	12	5.5	35	1.5	44	37	34
HM12-60	50	70	M4	89	25	60	46	46	30	12	5.5	35	1.5	44	37	34

型號 Model	S	Q	Z	s	E	C1	C2	F	J	j	重量 weight	軸承型號 Bearing Type	支持端 End support	聯軸器 Coupling
HM12-57	6.6	11	2	6.6	40	13	70	5	77	5.5	0.85	7001	BF12	30-42 Ø10-14
HM12-60	6.6	11	2	6.6	40	13	70	5	77	5.5	0.85	7001	BF12	30-42 Ø10-14

備註:

1.使用之軸承經預壓處理,軸向0間隙(All types make preload)

2.軸承採用P5配對組裝,最適宜滾珠螺桿使用.

(Bearing P5 pairing assembled using the most appropriate ball screw.)