

HM15-57 系列 HM15-60 系列

項目號 Numbering	部件名稱/ Part Name	數量 Quantity
1	傳動座主體/Housing	1
2	壓蓋/Gland	1
3	頂圈/Top ring	2
4	骨架油封/Simmerrings	2
5	M15X1s鎖緊螺母 M15X1s locknut	1組
6	角接觸軸承7002 Angular contact bearings 7002	1組

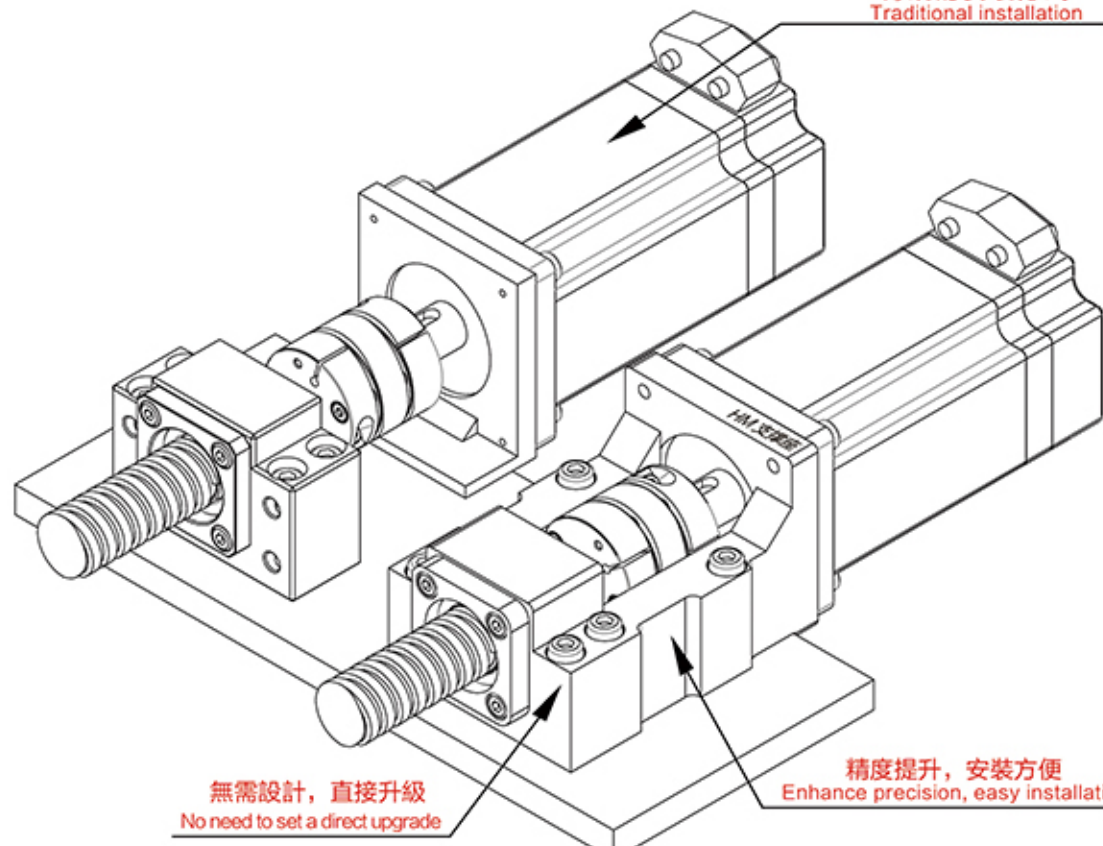


特点/Feature

支座组件已安装,无需再配固定侧,安装简化,因此马达的组装可通过嵌入部简单定位..軸心精度良好: 在構造上,滾珠絲杠側和馬達側的安裝部形成一體,可抑制兩軸的軸心偏差.專業為伺服、步進電機設計。

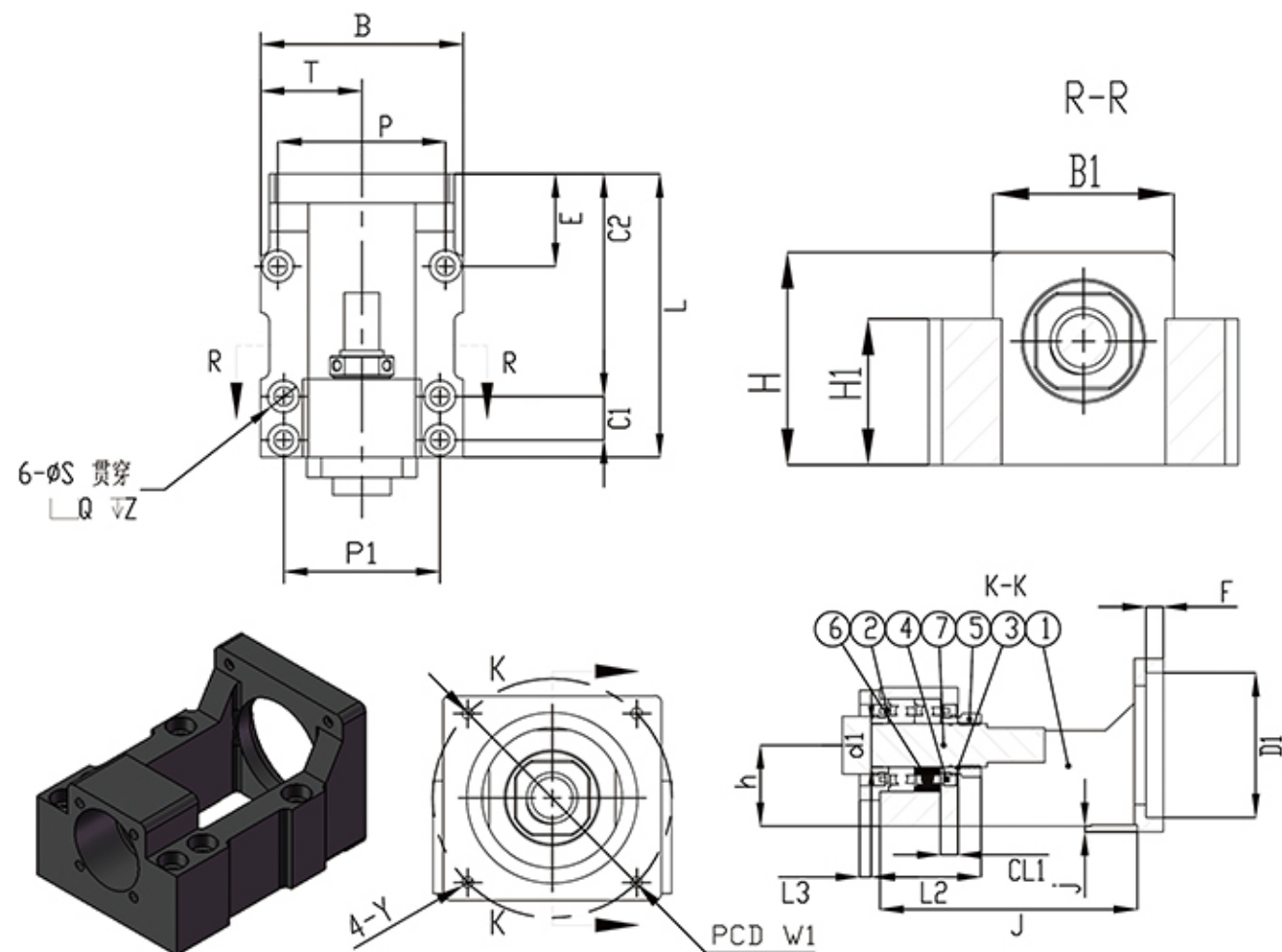
Carriage assembly is installed without adding the fixed side, ease of installation, thus assembly of the motor can be easily positioned by the embedding section .. good axis accuracy: in construction, installation side and motor side ball screw portion formed integrally, inhibit two shaft axis deviation. professional servo, stepper motor design.

傳統的安裝方式
Traditional installation



無需設計, 直接升級
No need to set a direct upgrade

精度提升, 安裝方便
Enhance precision, easy installation



選型尺寸表 / Selecyn Size Chart

單位: mm

型號 Model	D1	W1	Y	L	h0.02	B	P	P1	T	軸徑d1	CL1	L2	L3	H	H1	B1
HM15-57	38.1	66.7	M4	98	28	70	58	54	35	15	6	38	3	48	33	41
HM15-60	50	70	M4	98	28	70	58	54	35	15	6	38	3	48	33	41

型號 Model	S	Q	Z	E	C1	C2	F	J	j	重量 weight	軸承型號 Bearing Type	支持端 End support	聯軸器 Coupling
HM15-57	6.6	11	1	32	15	77	6	89	2	1.3	7002	BF15	30-42 Ø12-14
HM15-60	6.6	11	1	32	15	77	6	89	2	1.3	7002	BF15	30-42 Ø12-14

備註:

1.使用之軸承經預壓處理,軸向0間隙(All types make preload)

2.軸承採用P5配對組裝,最適宜滾珠螺桿使用。

(Bearing P5 pairing assembled using the most appropriate ball screw.)